

Drawing Revised (3 Point)
 Drawing Revised (11 Point)
 Drawing Revised (9 Point)

2.

3.

4.

5.

6.

7.

8.

9.

10.

11.

12.

13.

14.

15.

16.

17.

18.

19.

20.

21.

22.

23.

24.

25.

26.

27.

28.

29.

30.

31.

32.

33.

34.

35.

36.

37.

38.

39.

40.

41.

42.

43.

44.

45.

46.

47.

48.

49.

50.

51.

52.

53.

54.

55.

56.

57.

58.

59.

60.

61.

62.

63.

64.

65.

66.

67.

68.

69.

70.

71.

72.

73.

74.

75.

76.

77.

78.

79.

80.

81.

82.

83.

84.

85.

86.

87.

88.

89.

90.

91.

92.

93.

94.

95.

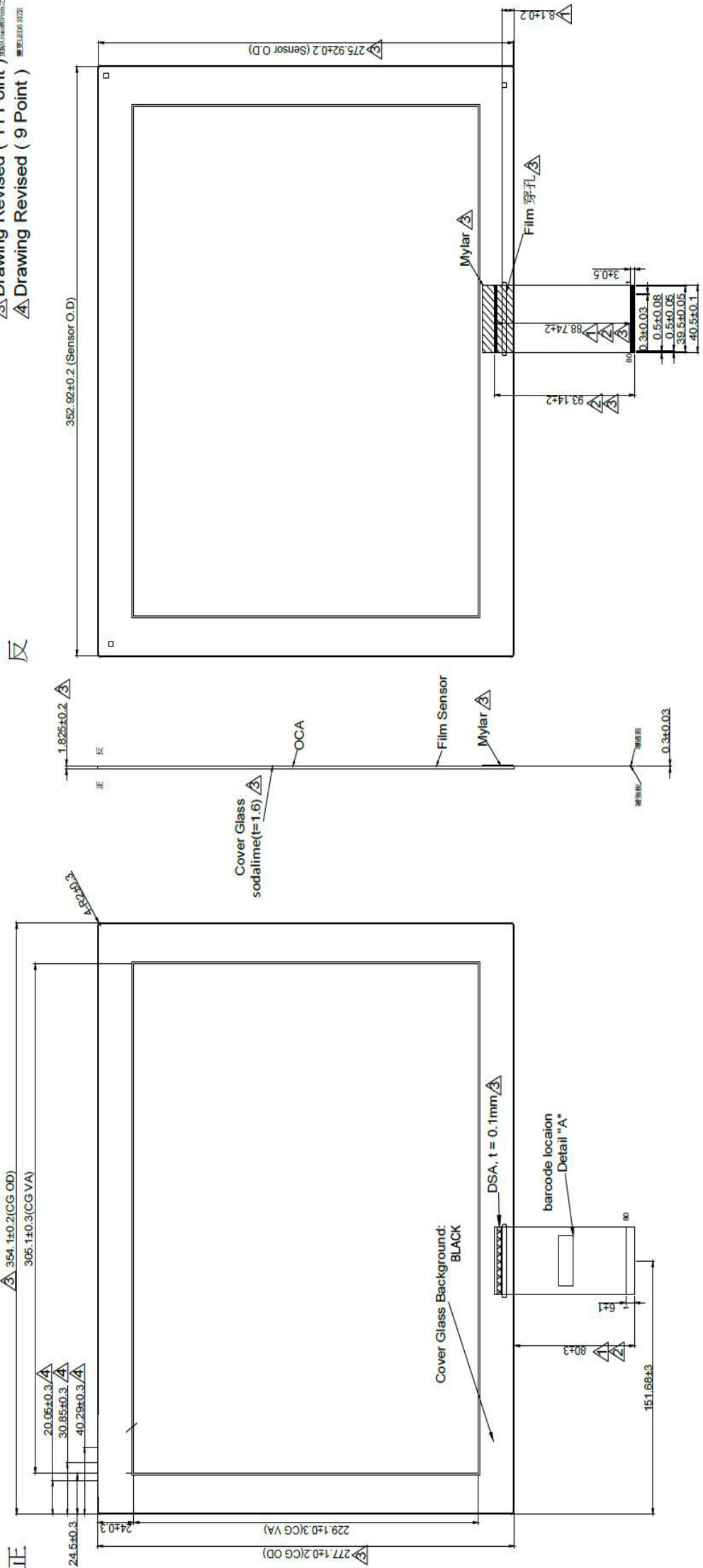
96.

97.

98.

99.

100.



正

24.5±0.3

24±0.3

20.05±0.3/A

30.85±0.3/A

40.29±0.3/A

229.1±0.3 (CG VA)

277.1±0.2 (CG OD)

151.68±3

80±3

6±1

80

DSG, t = 0.1mm

barcode location
Detail "A"

0.3±0.03

0.5±0.08

0.5±0.05

39.5±0.05

40.5±0.1

3±0.5

81±0.2

275.92±0.2 (Sensor O.D)

352.92±0.2 (Sensor O.D)

1.825±0.2

0.3±0.03

93.14±2

88.74±2

Mylar

Film Sensor

OCA

Cover Glass sodalime (t=1.6)

Mylar

Film 穿孔